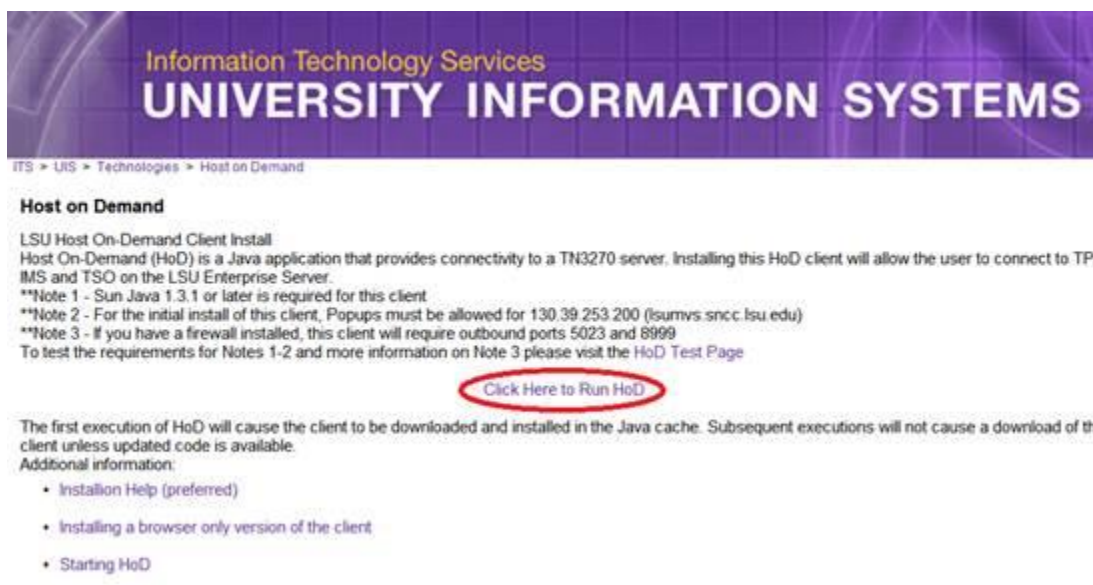


Setting up HoD on a Windows 7 pc with IE9

The following instructions are used to install the LSU-HoD. LSU-HoD is a Java application that provides connectivity to a TN3270 server. HoD has replaced the IBM Personal Communications (PCOMM) program that was used to access the mainframe. Unfortunately, this new program does not allow us to install it for you ahead of time as PCOMM did. The first execution of HoD will cause the client to be downloaded and installed in the Java cache. Subsequent executions will not cause a download of the client unless updated code is available.

- Open IE and go to www.lsu.edu/hod
- Click on the Click Here to Run HoD (see below)



Information Technology Services
UNIVERSITY INFORMATION SYSTEMS

ITS > UIS > Technologies > Host on Demand

Host on Demand

LSU Host On-Demand Client Install
Host On-Demand (HoD) is a Java application that provides connectivity to a TN3270 server. Installing this HoD client will allow the user to connect to TP3, IMS and TSO on the LSU Enterprise Server.
**Note 1 - Sun Java 1.3.1 or later is required for this client
**Note 2 - For the initial install of this client, Popups must be allowed for 130.39.253.200 (lsumvs.sncc.lsu.edu)
**Note 3 - If you have a firewall installed, this client will require outbound ports 5023 and 8999
To test the requirements for Notes 1-2 and more information on Note 3 please visit the HoD Test Page

[Click Here to Run HoD](#)

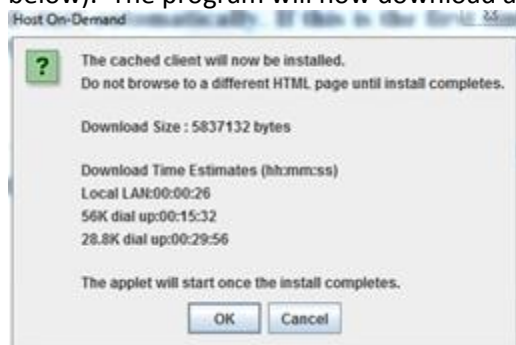
The first execution of HoD will cause the client to be downloaded and installed in the Java cache. Subsequent executions will not cause a download of the client unless updated code is available.
Additional information:

- [Installation Help \(preferred\)](#)
- [Installing a browser only version of the client](#)
- [Starting HoD](#)

- The screen will change and at the bottom top of the screen you will see a box saying “Do you want to Open or Save...” Click Open. (If you are using IE 8, the screen will change and at the top of the screen you will see “To help protect your security Internet Explorer blocked this site from downloading files to your computer. Click here for options.” Right click on that line and elect Download file.)
- You will get a Warning – Security box (like below) and here you need put a check mark in the box beside Always trust content from this publisher and then click on Run . If you forget to put a check mark beside the Always trust content box, it will prompt you with this box every time you open HoD. So we advise you to put the check mark.

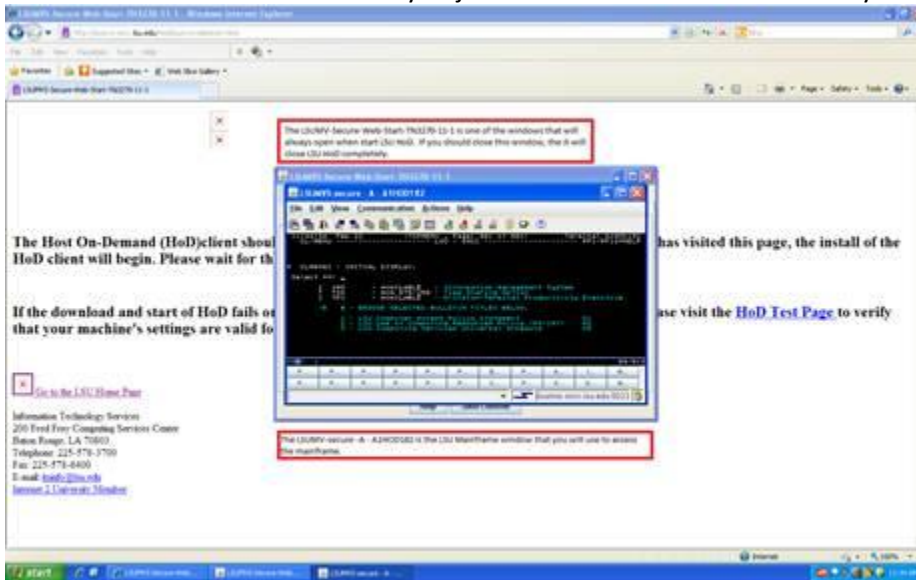


- Then you will get another box “Host on-Demand” and you need to click on OK (like the one below). The program will now download and install.

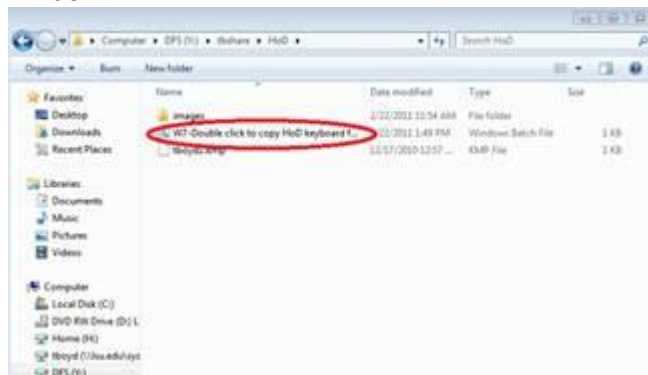


- Once the program is installed it will open two windows. (see below) One window contains the mainframe session and the other is the Java control window that is usually called LSUMVS-Secure-Web-Start-TN3270-11-1. You must leave this window open. If you close the Java window (the one that says LSUMVS-Secure-Web-Start-TN3270-11.0) then it will close your mainframe

window. So we recommend that you just minimize the Java window so you won't see it.



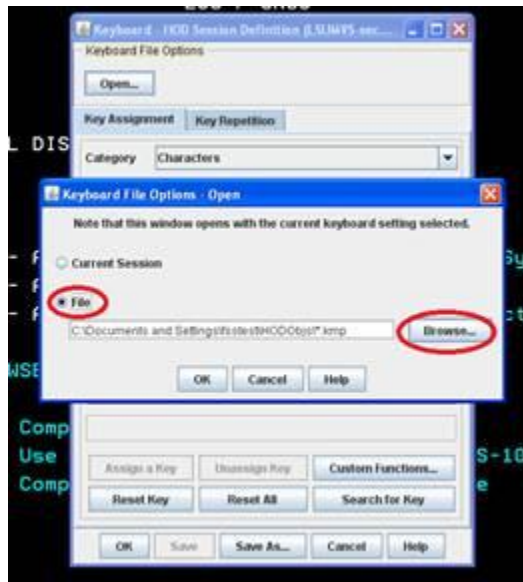
- In order for your keyboard to work like it does when using PCOMM you must do the following:
 - Close all windows of HoD.
 - Go to the Desktop of your computer and double click on the Computer icon. Then you need to double click on the DFS (Y: drive) and go to TBSHARE folder. Find the folder called HoD and double click on it to open it. Now I want you to double click on the file called W7-Double click to copy HoD keyboard file.bat. This will copy the settings that you are used to for the mainframe to your computer. Now you can close the computer window.



- Now open HoD by clicking on the LSUMVS-Secure-Web-Start-TN3270-11-1 button found on your Desktop (button looks like below)



- Go to the window that looks like the mainframe



- Now your keystrokes should be almost the same as they were when you used the PCOMM program to access the mainframe.